

LBR-AC2E 2-Reader Access Controller



Key Features

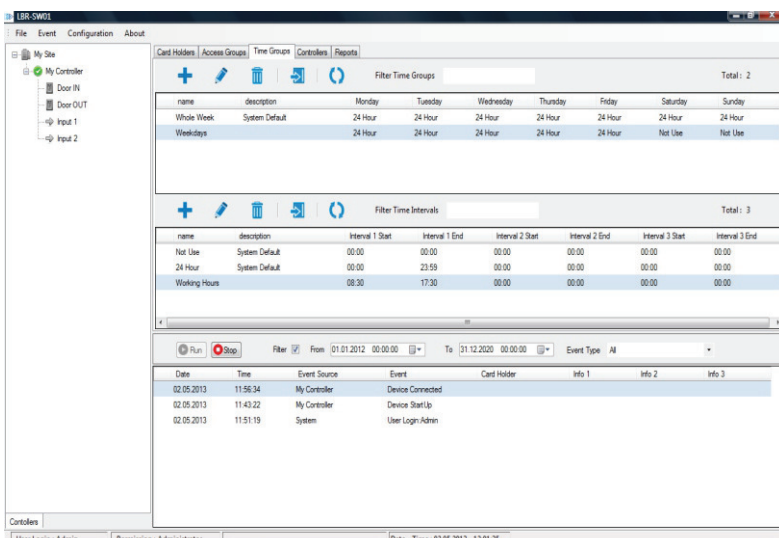
- Supports up to 45,000 cardholders
- 50,000 transactions
- 2-reader connection ports
- 128 time schedules
- Anti-passback support
- Automatic fire release
- Card, PIN or card+PIN operation
- 4 programmable inputs
- 3 programmable outputs
- Diagnostic leds
- Ethernet, RS-485 communication ports
- Adjustable doorlock release time

Product Brief

LBR-AC2E is a high-capacity, scalable and reliable access controller that has the advantages of central control, configuration and online event reporting, the unit can be configured one door with IN - OUT readers or two doors with IN readers.

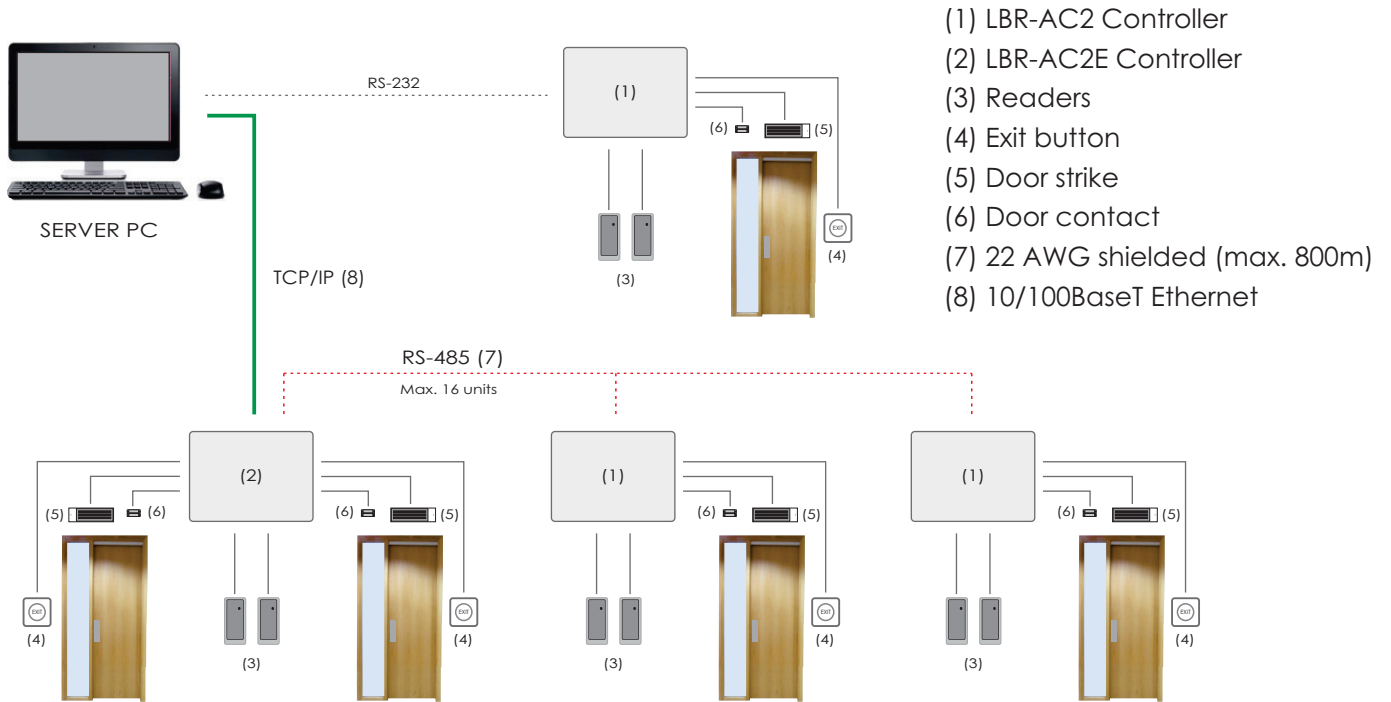
LBR-AC2E system supports up to 256 doors which can meet requirements of all small and medium-sized installations. Each controller can be monitor and controlled via central management software

Central Management Software



- Advanced graphical user interface
- SQL database support
- Real-time event and status update
- Supports up to 128 ACU connection
- Customizable reporting formats
- Online event reporting pane
- Excel and Pdf report exporting formats
- Manuel door control
- Straightforward installation and operation
- Compatible with Microsoft Windows 7, Windows Vista, Windows XP

Installation Diagram



Technical Specifications

Model	LBR-AC2E
Cardholder capacity	45,000
Event buffer	50,000 Event with date&time stamp
Reader number	2 wiegand compatible
Door number	1 or 2
Inputs	4 programmable
Outputs	3 programmable NO/NC (3A @ 30Vdc)
Time zones	128
Operation modes	standalone or networked
Communication	Ethernet, RS-485 (16 units)
Power consumption	6W @12 VDC
Dimensions (HxWxD)	330x260x93 mm
Operating environment	-5°C - +50°C / 95% RH

Dimensions

