

## LBR-AC4E 4-Reader Access Controller

### Key Features



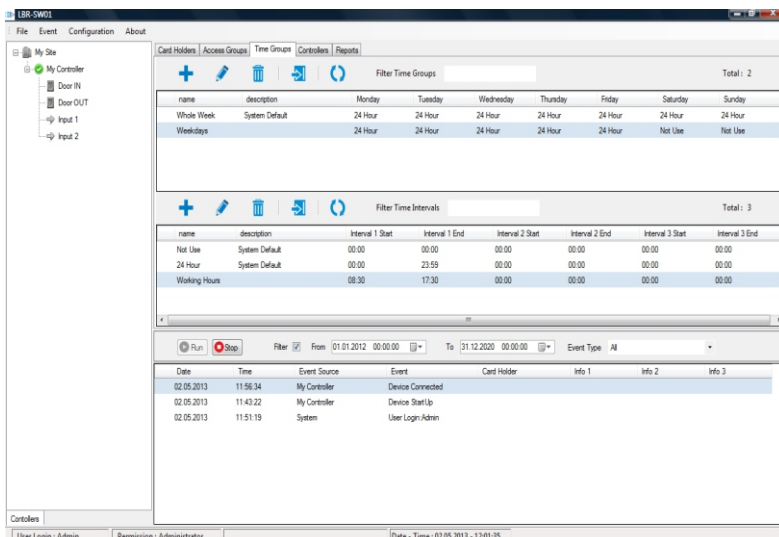
- Supports up to 52,000 cardholders
- 100,000 transactions
- 4-reader connection ports
- 128 time schedules
- Anti-passback support
- Automatic fire release
- Card, PIN or card+PIN operation
- 8 programmable inputs
- 8 programmable outputs
- Diagnostic leds
- TCP/IP ,RS-485 communication ports
- Adjustable doorlock release time

### Product Brief

LBR-AC4 is a high-capacity, scalable and reliable access controller that has the advantages of central control, configuration and online event reporting, the unit can be configured two doors with IN - OUT readers or four doors with IN readers.

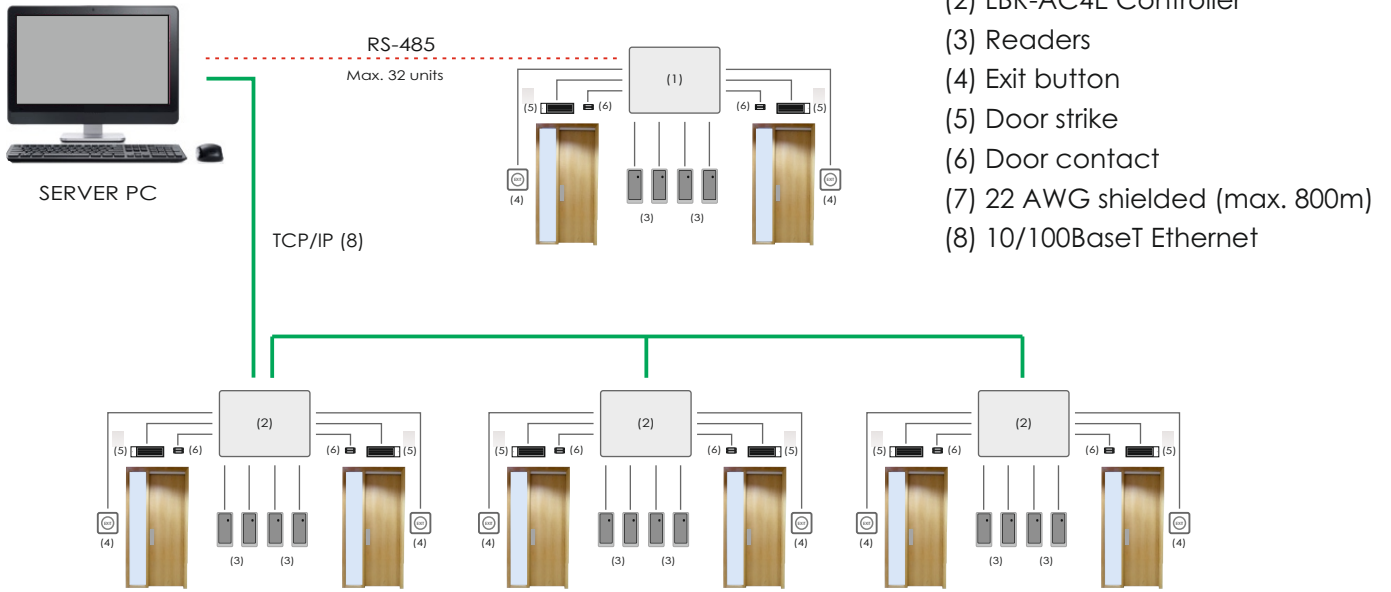
LBR-AC4 system supports up to 512 doors which can meet requirements of all medium and high scale installations. Each controller can be monitor and controlled via central management software

### Central Management Software



- Advanced graphical user interface
- SQL database support
- Real-time event and status update
- Supports up to 128 ACU connection
- Customizable reporting formats
- Online event reporting pane
- Excel and Pdf report exporting formats
- Manuel door control
- Straightforward installation and operation
- Compatible with Microsoft Windows 7, Windows Vista, Windows XP

# Installation Diagram



# Technical Specifications

Model	LBR-AC4E
Cardholder capacity	52,000
Event buffer	100,000 Event with date&time stamp
Reader number	4 wiegand compatible
Door number	1,2,3 or 4
Inputs	8 programmable
Outputs	8 programmable NO/NC (3A @ 30Vdc)
Time zones	128
Operation modes	standalone or networked
Communication	RS-232,RS-485 (32 units)
Power consumption	6W @12 VDC
Dimensions (HxWxD)	330x260x93 mm
Operating environment	-5°C - +50°C / 95% RH

Dimensions

